

Masterplanning
for the
Main Branch + Downtown Branch
of the
Farmington Community Library
Farmington + Farmington Hills, MI



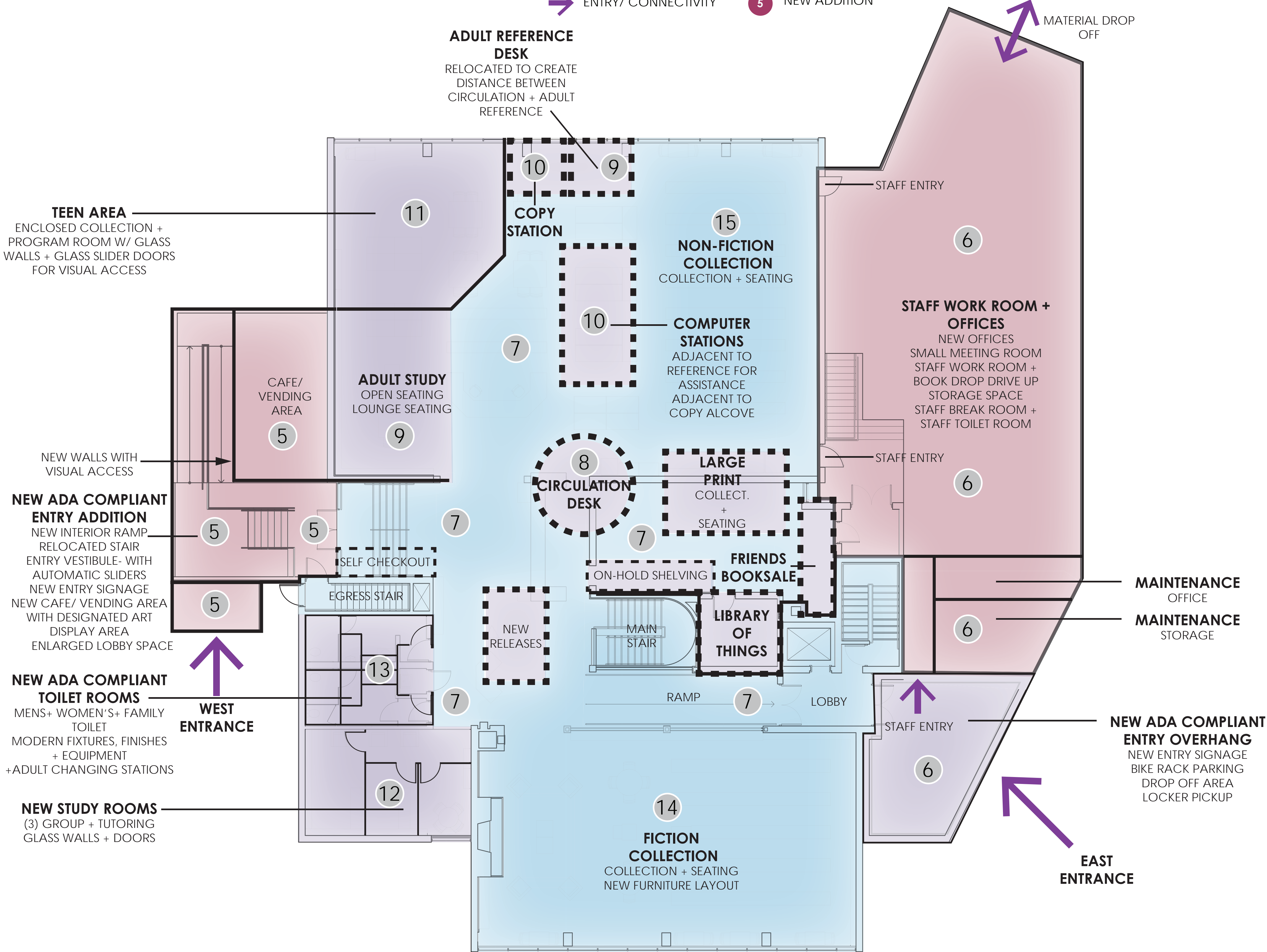
- POTENTIAL PROJECTS
(PHASING TO BE DETERMINED)
- 1 Revised Parking Lot
New Medians
New Layout
Updated Pedestrian paths
 - 2 New Outdoor Program Area
New Retaining Wall + Drainage
 - 3 New Amphitheater + Landscape plaza
 - 4 New Entry Plaza
 - 5 West Side Addition
New Stair/Ramp
New Cafe/ Vending Area
New Entry
Renovated Ramp + Lobby
 - 6 East Side Addition
New Staff Entry w/ ADA Overhang
New Meeting Room
New ADA Compliant Toilets
New Vestibule/ Stair
New Staff Workroom/ Office
New Storage Area
 - 7 Modifications to Primary Circulation Paths
Renovated Entrance
Designated Self-Checkout Stations
Relocated Large Print Station
Designated Friends Booksale
Designated Library of Things
Relocated New Release Stand
 - 8 New Circulation Desk
New Location + Layout
Millwork + Finishes
 - 9 Renovated Adult Study
New layout
Relocated Reference Desk
 - 10 New Computer + Copy Stations
New Computer Stations + Relocated
New Copy Stations + Relocated
 - 11 New Teen Area
New Location + Layout
New Collection
New Program Room
 - 12 New Meeting Rooms
New Study Rooms
New Meeting/ Program Room
 - 13 New Toilet Rooms
New Fixtures + Equipment
New Finishes
 - 14 Renovated Fiction Collection
Renovated Collection
New Seating + Furniture Layout + Finishes
 - 15 Renovated Non-Fiction Collection
Renovated Collection
New Seating + Furniture Layout + Finishes
 - 16 Renovated Children's Area
New/ Relocated Children's Reference
Updated Play Area
Designated Storytime/ Program
Renovated Collection + Seating
Designated Computer Area
Designated Stroller Parking Area
 - 17 Renovated Lower Level Circulation
Updated Lobby
New Finishes + Furniture + Signage
 - 18 Renovated Meeting Rooms
New Partitions + Finishes
 - 19 Renovated Quiet Study
New Furniture + Finishes

USE OF SPACE

- NEW ENCLOSURE
- NEW PROGRAM-
OPEN SPACE
- EXTERIOR CANOPY
- ENTRY/ CONNECTIVITY

KEY

- 1 NEW OUTDOOR PROGRAM AREA
- 2 EXISTING SPACE- NO CHANGES
- 3 EXISTING SPACE- MODERN FINISHES,
FIXTURES + FURNITURE AS NEEDED
- 4 EXISTING SPACE- NEW CONSTRUCTION +
NEW/RELOCATED PROGRAM AS NEEDED
- 5 NEW ADDITION



33610 GRAND RIVER
FARMINGTON, MI, 48335
www.mcdarchitects.com
248-374-0001

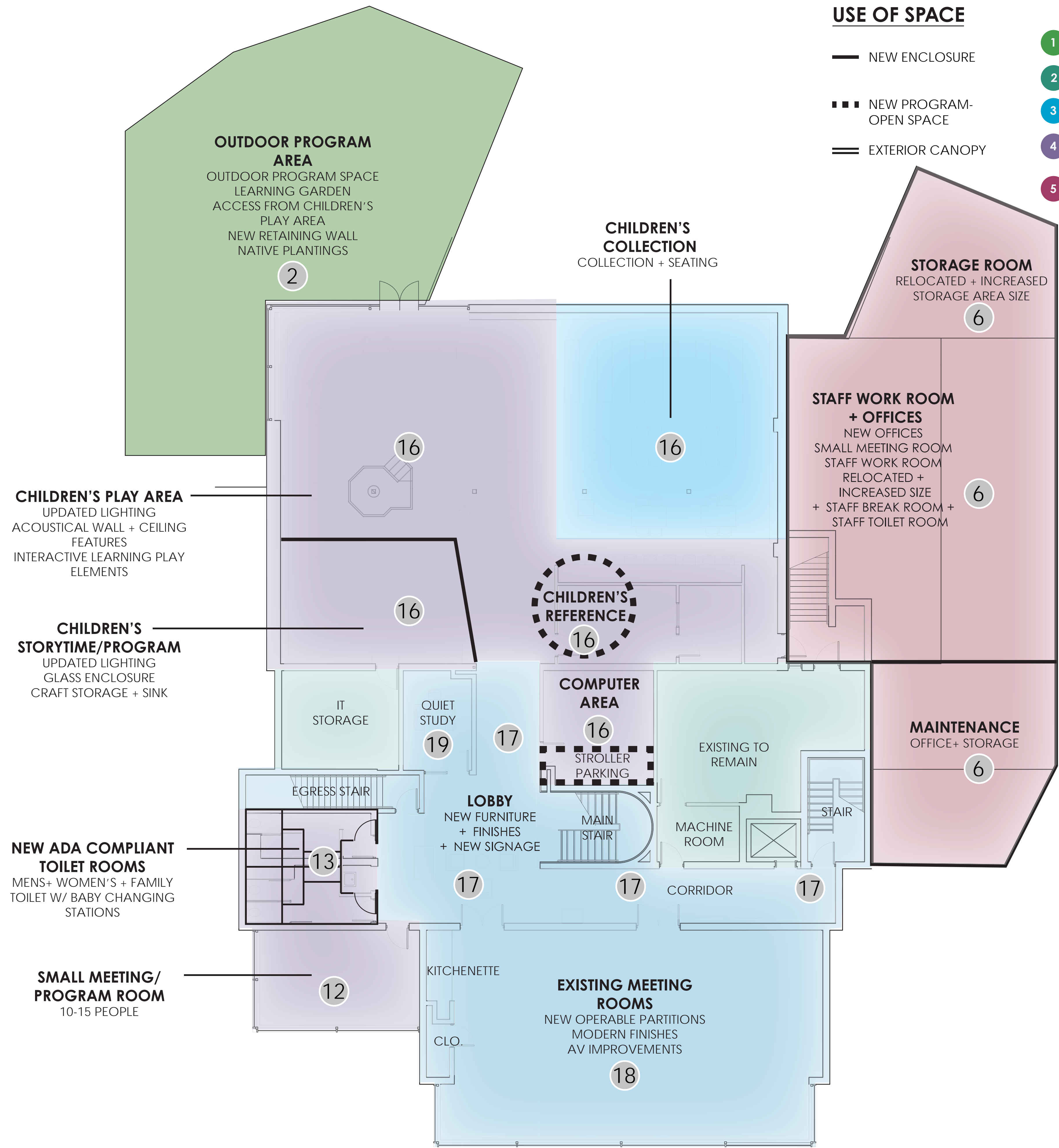
MASTERPLANNING FOR:
**FARMINGTON
COMMUNITY
LIBRARY**
32737 W 12 MILE RD.
FARMINGTON HILLS, MI

**MASTER PLAN
DOWNTOWN
BRANCH
MAIN LEVEL
FLOOR PLAN**

DRAWN BY: DS
APPROVED BY: SS

PROJECT NO. 22275
SHEET NO. MP-1

- POTENTIAL PROJECTS
(PHASING TO BE DETERMINED)
- 1 Revised Parking Lot
New Medians
New Layout
Updated Pedestrian paths
 - 2 New Outdoor Program Area
New Retaining Wall + Drainage
 - 3 New Amphitheater + Landscape plaza
 - 4 New Entry Plaza
 - 5 West Side Addition
New Stair/Ramp
New Cafe/ Vending Area
New Entry
Renovated Ramp + Lobby
 - 6 East Side Addition
New Staff Entry w/ ADA Overhang
New Meeting Room
New ADA Compliant Toilets
New Vestibule/ Stair
New Staff Workroom/ Office
New Storage Area
 - 7 Modifications to Primary Circulation Paths
Renovated Entrance
Designated Self-Checkout Stations
Relocated Large Print Station
Designated Friends Booksale
Designated Library of Things
Relocated New Release Stand
 - 8 New Circulation Desk
New Location + Layout
Millwork + Finishes
 - 9 Renovated Adult Study
New layout
Relocated Reference Desk
 - 10 New Computer + Copy Stations
New Computer Stations + Relocated
New Copy Stations + Relocated
 - 11 New Teen Area
New Location + Layout
New Collection
New Program Room
 - 12 New Meeting Rooms
New Study Rooms
New Meeting/ Program Room
 - 13 New Toilet Rooms
New Fixtures + Equipment
New Finishes
 - 14 Renovated Fiction Collection
Renovated Collection
New Seating + Furniture Layout + Finishes
 - 15 Renovated Non-Fiction Collection
Renovated Collection
New Seating + Furniture Layout + Finishes
 - 16 Renovated Children's Area
New/ Relocated Children's Reference
Updated Play Area
Designated Storytime/ Program
Renovated Collection + Seating
Designated Computer Area
Designated Stroller Parking Area
 - 17 Renovated Lower Level Circulation
Updated Lobby
New Finishes + Furniture + Signage
 - 18 Renovated Meeting Rooms
New Partitions + Finishes
 - 19 Renovated Quiet Study
New Furniture + Finishes



USE OF SPACE

- NEW ENCLOSURE
- NEW PROGRAM-OPEN SPACE
- EXTERIOR CANOPY

KEY

- 1 NEW OUTDOOR PROGRAM AREA
- 2 EXISTING SPACE- NO CHANGES
- 3 EXISTING SPACE- MODERN FINISHES, FIXTURES + FURNITURE AS NEEDED
- 4 EXISTING SPACE- NEW CONSTRUCTION + NEW/RELOCATED PROGRAM AS NEEDED
- 5 NEW ADDITION



33610 GRAND RIVER
FARMINGTON, MI, 48335
www.mcdarchitects.com
248-374-0001

MASTERPLANNING FOR:

FARMINGTON COMMUNITY LIBRARY

32737 W 12 MILE RD.
FARMINGTON HILLS, MI

MASTER PLAN DOWNTOWN BRANCH LOWER LEVEL FLOOR PLAN

DRAWN BY: DS
APPROVED BY: SS

PROJECT NO. 22275
SHEET NO. MP-2

LOWER PLAN
1/8" = 1'-0"

- [illegible]

PROJECT NO.	SHEET NO.
22275	MP-3

MAIN FLOOR PLAN

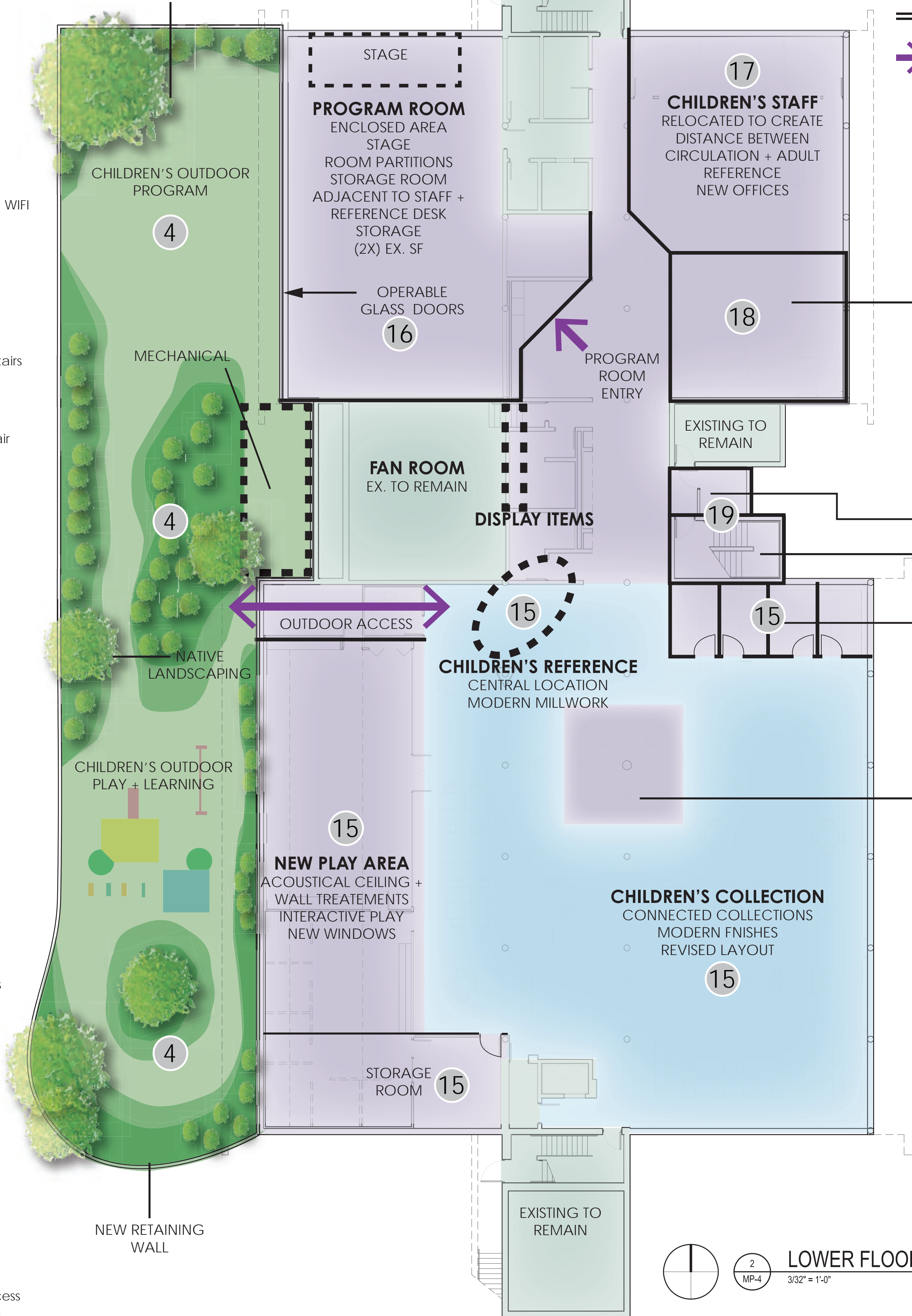
$$3/32'' = 1'-0''$$

POTENTIAL PROJECTS
(PHASING TO BE DETERMINED)

- 1 Entry + Rear Parking Lot + Pavement/ Paths
 - New Medians + Layouts + Ped. Paths
 - Mill + Fill
- 2 New Outdoor Children's Program
 - New Play Equipment
 - New Learning Garden
 - New Mechanical Courtyard
 - New Retaining Wall Structure
- 3 Outdoor Program Area
 - Outdoor Programming + Native Planting
- 4 New Nature Walk
 - Outdoor Programming + Pocket Park
 - Improved Connectivity Between Green Space and Waterway
 - Native Planting
- 5 New Outdoor Patio/ Study
 - New Garden/ Patio + Seating w/ Shade + WIFI
- 6 Staff Outdoor Break Area
- 7 East Addition
 - Expanded Sorting Area
 - New Loading Area + Landscaping Wall
 - Relocated AMH
- 8 New ADA Entry
 - New Entry w/ Overhang + ADA Ramp + Stairs
 - Modified Vestibule
 - New After Hours Storage Lockers
- 9 Renovated Adult Reference
 - New Entry Feature + Reference Desk + Stair
 - New Accent Fireplace
 - New Meeting/ Study Rooms
- 10 Renovated Adult Collection
 - Revised Layout
 - Revised Ramp + Stair Layout
 - New Study Rooms
- 11 New Circulation Desk
 - New Layout + Finishes + Lighting
- 12 Renovated Teen Area
 - New Location + Signage + Storage Area
 - Expanded Collection
- 13 Entrance + Main Paths of Circulation
 - Renovated Entry + Cafe
 - Relocated Self Checkout + Copy Stations
 - New Layout + Finishes
 - New Computer Lab + Stations
 - Designated Friends Booksale + Storage
 - Relocated Local History
 - New Library of Things
 - New Productivity Lab
- 14 Renovated Staff Area
 - Renovated Staff Workroom + Offices
 - New Storage Room + IT Office
 - Renovated Adult Services
- 15 Renovated Children's Collection + Reference
 - Central Location/ New Millwork
 - Connected Collections/ Revised Layout
 - New Play Area + Storage Room
 - New Ceiling + Wall Treatments + Windows
 - New Study Rooms/ Glass Respite
- 16 New Program Room
 - New Room Partitions + Storage + Platform
 - Operable Glass Doors/ Outdoor Access
- 17 Relocated Children's Staff Room
 - New Location
 - New Offices
- 18 New ADA Compliant Toilet Rooms
 - Men's + Women's + Family Toilet
 - Changing Stations
 - Modern Finishes + Equipment
- 19 New Stair + Slide
 - New Signage + Layout
- 20 Renovated Staff Area
 - New Offices + Suite + Emergency Exit Access
 - Renovated Staff Lounge + Meeting Room
 - Modern Furniture + Equipment + Lighting

OUTDOOR PROGRAM
AREA

OUTDOOR PROGRAM SPACE
PLAY STRUCTURE
LEARNING GARDEN
MECHANICAL COURTYARD
ARCHITECTURAL SHADE
STRUCTURE W/ INTERIOR
LIGHTING

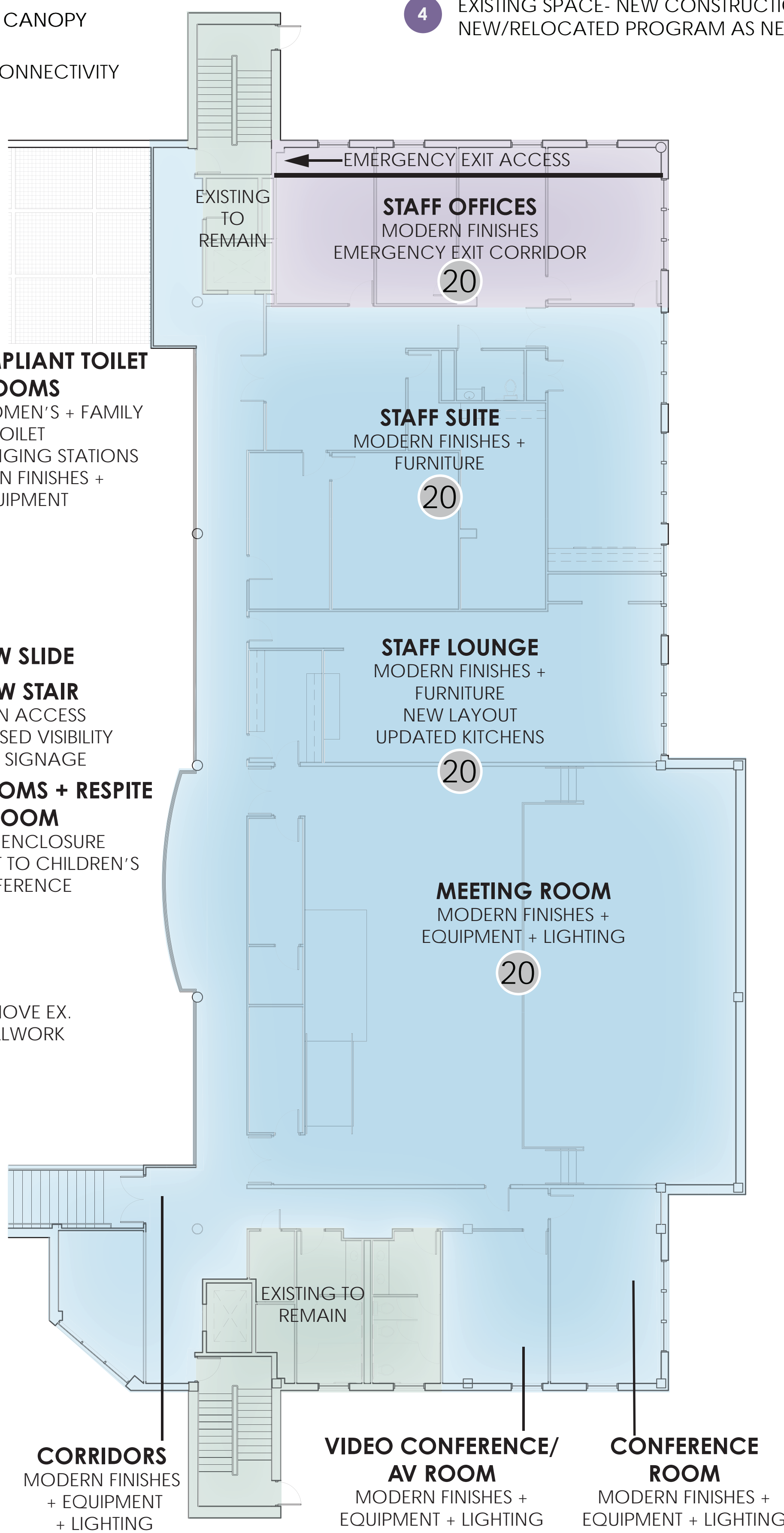


USE OF SPACE

- NEW ENCLOSURE
- NEW PROGRAM- OPEN SPACE
- == EXTERIOR CANOPY
- ➔ ENTRY/ CONNECTIVITY

KEY

- 1 NEW OUTDOOR PROGRAM AREA
- 2 EXISTING SPACE- NO CHANGES
- 3 EXISTING SPACE- MODERN FINISHES, FIXTURES + FURNITURE AS NEEDED
- 4 EXISTING SPACE- NEW CONSTRUCTION + NEW/RELOCATED PROGRAM AS NEEDED



33610 GRAND RIVER
FARMINGTON, MI, 48335
www.mcdarchitects.com
248-374-0001

MASTER PLANNING FOR:
**FARMINGTON
COMMUNITY
LIBRARY**
32737 W 12 MILE RD.
FARMINGTON HILLS, MI

MASTER PLAN
UPPER AND
LOWER
FLOOR PLAN

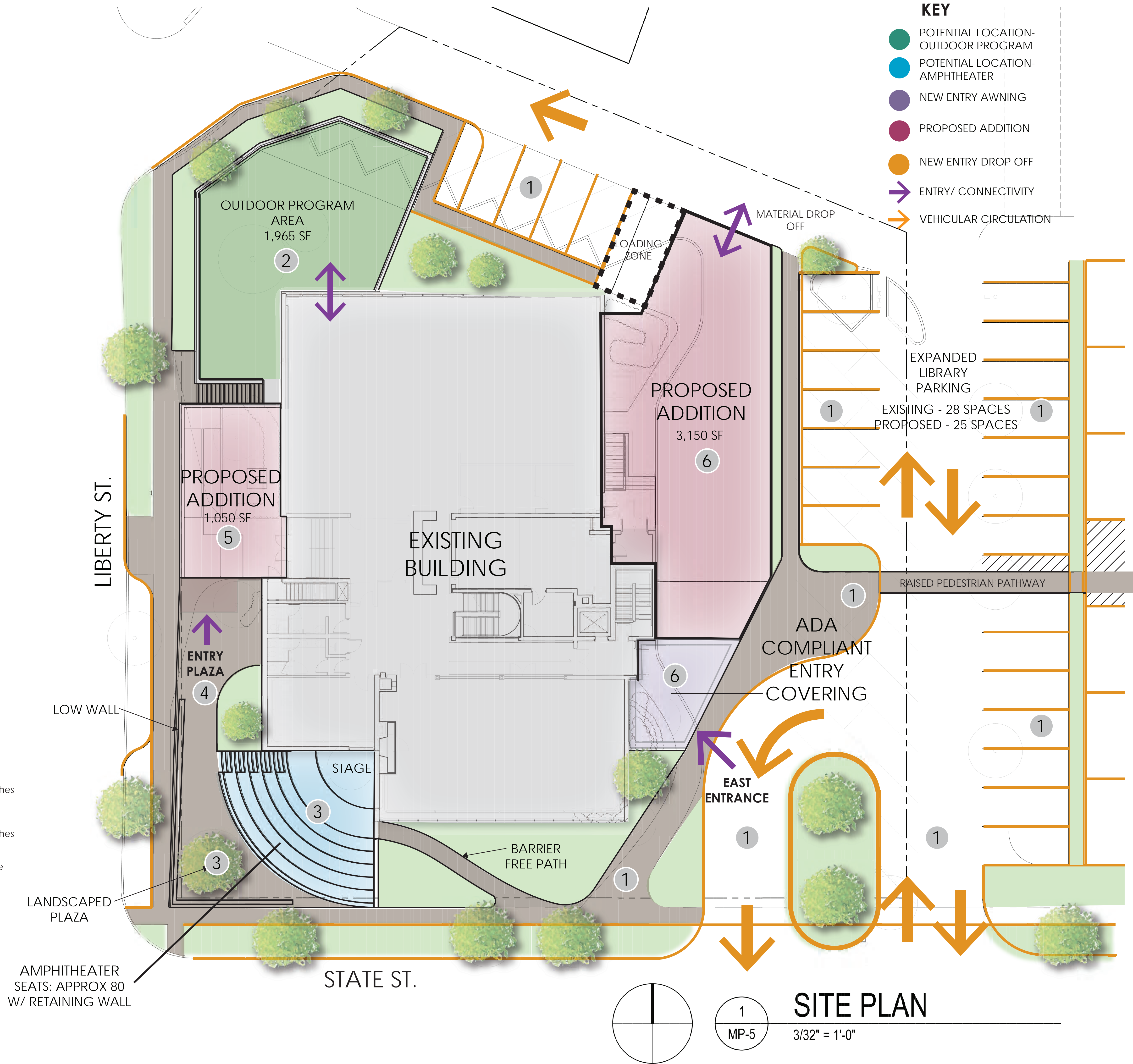
DRAWN BY: DS
APPROVED BY: SS

PROJECT NO. 22275
SHEET NO. MP-4

LOWER FLOOR PLAN
3/32" = 1'-0"

UPPER FLOOR PLAN
3/32" = 1'-0"

- POTENTIAL PROJECTS
(PHASING TO BE DETERMINED)
- 1 Revised Parking Lot
New Medians
New Layout
Updated Pedestrian paths
 - 2 New Outdoor Program Area
New Retaining Wall + Drainage
 - 3 New Amphitheater + Landscape plaza
 - 4 New Entry Plaza
 - 5 West Side Addition
New Stair/Ramp
New Cafe/ Vending Area
New Entry
Renovated Ramp + Lobby
 - 6 East Side Addition
New Staff Entry w/ ADA Overhang
New Meeting Room
New ADA Compliant Toilets
New Vestibule/ Stair
New Staff Workroom/ Office
New Storage Area
 - 7 Modifications to Primary Circulation Paths
Renovated Entrance
Designated Self-Checkout Stations
Relocated Large Print Station
Designated Friends Booksale
Designated Library of Things
Relocated New Release Stand
 - 8 New Circulation Desk
New Location + Layout
Millwork + Finishes
 - 9 Renovated Adult Study
New layout
Relocated Reference Desk
 - 10 New Computer + Copy Stations
New Computer Stations + Relocated
New Copy Stations + Relocated
 - 11 New Teen Area
New Location + Layout
New Collection
New Program Room
 - 12 New Meeting Rooms
New Study Rooms
New Meeting/ Program Room
 - 13 New Toilet Rooms
New Fixtures + Equipment
New Finishes
 - 14 Renovated Fiction Collection
Renovated Collection
New Seating + Furniture Layout + Finishes
 - 15 Renovated Non-Fiction Collection
Renovated Collection
New Seating + Furniture Layout + Finishes
 - 16 Renovated Children's Area
New/ Relocated Children's Reference
Updated Play Area
Designated Storytime/ Program
Renovated Collection + Seating
Designated Computer Area
Designated Stroller Parking Area
 - 17 Renovated Lower Level Circulation
Updated Lobby
New Finishes + Furniture + Signage
 - 18 Renovated Meeting Rooms
New Partitions + Finishes
 - 19 Renovated Quiet Study
New Furniture + Finishes



- KEY**
- POTENTIAL LOCATION-OUTDOOR PROGRAM
 - POTENTIAL LOCATION-AMPHITHEATER
 - NEW ENTRY AWNING
 - PROPOSED ADDITION
 - NEW ENTRY DROP OFF
 - ENTRY/ CONNECTIVITY
 - VEHICULAR CIRCULATION



33610 GRAND RIVER
FARMINGTON, MI, 48335
www.mcdarchitects.com
248-374-0001

MASTERPLANNING FOR:
FARMINGTON COMMUNITY LIBRARY
23500 LIBERTY ST.
FARMINGTON, MI

SITE PLAN

DRAWN BY: DS	
APPROVED BY: SS	
PROJECT NO.	SHEET NO.
22275	MP-5

POTENTIAL PROJECTS
(PHASING TO BE DETERMINED)

- 1 Entry + Rear Parking Lot + Pavement/ Paths
 - New Medians + Layouts + Ped. Paths
 - Mill + Fill
- 2 New Outdoor Children's Program
 - New Play Equipment
 - New Learning Garden
 - New Mechanical Courtyard
 - New Retaining Wall Structure
- 3 Outdoor Program Area
 - Outdoor Programming + Native Planting
- 4 New Nature Walk
 - Outdoor Programming + Pocket Park
 - Improved Connectivity Between Green Space and Waterway
 - Native Planting
- 5 New Outdoor Patio/ Study
 - New Garden/ Patio + Seating w/ Shade + WIFI
- 6 Staff Outdoor Break Area
- 7 East Addition
 - Expanded Sorting Area
 - New Loading Area + Landscaping Wall
 - Relocated AMH
- 8 New ADA Entry
 - New Entry w/ Overhang + ADA Ramp + Stairs
 - Modified Vestibule
 - New After Hours Storage Lockers
- 9 Renovated Adult Reference
 - New Entry Feature + Reference Desk + Stair
 - New Accent Fireplace
 - New Meeting/ Study Rooms
- 10 Renovated Adult Collection
 - Revised Layout
 - Revised Ramp + Stair Layout
 - New Study Rooms
- 11 New Circulation Desk
 - New Layout + Finishes + Lighting
- 12 Renovated Teen Area
 - New Location + Signage + Storage Area
 - Expanded Collection
- 13 Entrance + Main Paths of Circulation
 - Renovated Entry + Cafe
 - Relocated Self Checkout + Copy Stations
 - New Layout + Finishes
 - New Computer Lab + Stations
 - Designated Friends Booksale + Storage
 - Relocated Local History
 - New Library of Things
 - New Productivity Lab
- 14 Renovated Staff Area
 - Renovated Staff Workroom + Offices
 - New Storage Room + IT Office
 - Renovated Adult Services
- 15 Renovated Children's Collection + Reference
 - Central Location/ New Millwork
 - Connected Collections/ Revised Layout
 - New Play Area + Storage Room
 - New Ceiling + Wall Treatments + Windows
 - New Study Rooms/ Glass Respite
- 16 New Program Room
 - New Room Partitions + Storage + Platform
 - Operable Glass Doors/ Outdoor Access
- 17 Relocated Children's Staff Room
 - New Location
 - New Offices
- 18 New ADA Compliant Toilet Rooms
 - Men's + Women's + Family Toilet
 - Changing Stations
 - Modern Finishes + Equipment
- 19 New Stair + Slide
 - New Signage + Layout
- 20 Renovated Staff Area
 - New Offices + Suite + Emergency Exit Access
 - Renovated Staff Lounge + Meeting Room
 - Modern Furniture + Equipment + Lighting

OUTDOOR PROGRAM AREA
OUTDOOR PROGRAM SPACE
PLAY STRUCTURE
LEARNING GARDEN
MECHANICAL COURTYARD
ARCHITECTURAL SHADE
STRUCTURE W/ INTERIOR
LIGHTING
NATIVE PLANTINGS

STAFF
OUTDOOR
BREAK AREA

EXISTING ELECTRICAL
EQUIPMENT + NEW
LANDSCAPING WALL

PROPOSED LOADING
ADDITION ZONE

STAFF
ENTRY

NEW
OUTDOOR
PROGRAM
AREA

NEW ADA COMPLIANT
ENTRY

OUTDOOR
PATIO/ STUDY

OUTDOOR
PROGRAM
AREA

NATURE WALK/ OUTDOOR
PROGRAMMING
NATIVE PLANTINGS

POCKET
PARK

IMPROVED
CONNECTIVITY
BETWEEN GREEN
SPACE AND
WATERWAY

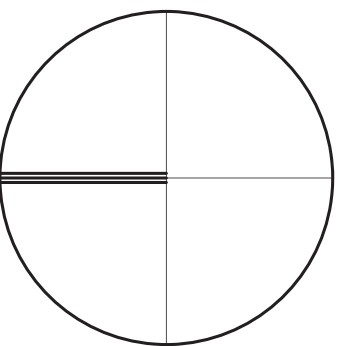
RAISED
LANDSCAPED
PEDESTRIAN
PATHWAY

NEW SIGNAGE

RAISED
LANDSCAPED
PEDESTRIAN
PATHWAY

BARRIER
FREE PARKING

BIOSWALE



1
MP-6

SITE PLAN

1/32" = 1'-0"

KEY

- POTENTIAL LOCATION-
OUTDOOR PROGRAM
- NEW ENTRY AWNING
- PROPOSED ADDITION
- ENTRY/ CONNECTIVITY
- CONNECTIVITY BETWEEN
GREEN SPACE AND
WATERWAY



33610 GRAND RIVER
FARMINGTON, MI, 48335
www.mcdarchitects.com
248-374-0001

MASTERPLANNING FOR:
**FARMINGTON
COMMUNITY
LIBRARY**
32737 W 12 MILE RD.
FARMINGTON HILLS, MI

**MASTER PLAN
SITE PLAN**

DRAWN BY: DS	
APPROVED BY: SS	
PROJECT NO.	SHEET NO.
22275	MP-6